

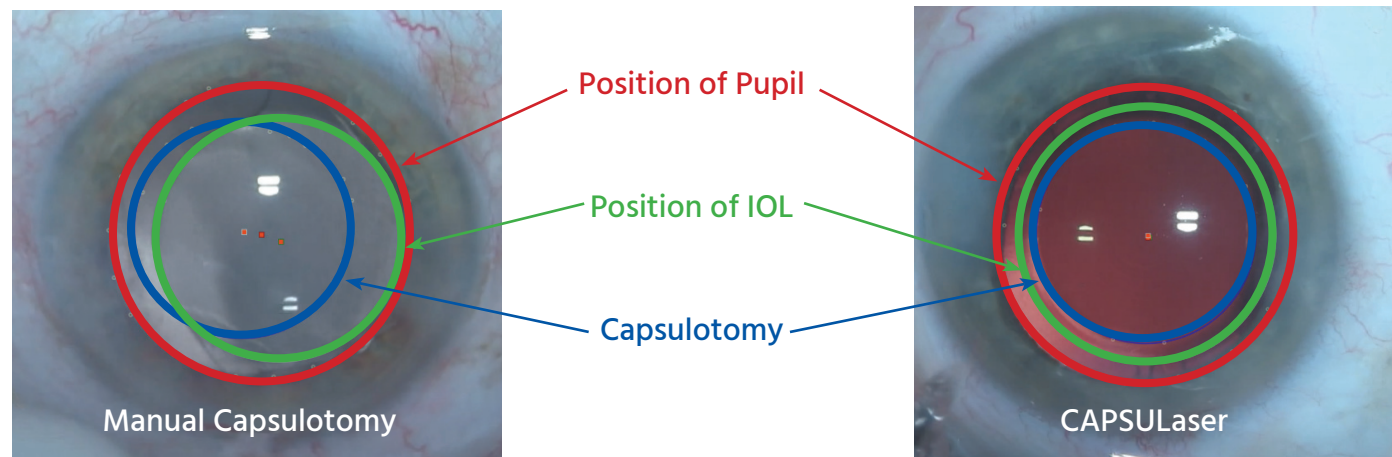


CAPSULASER[®]
Out of this world

Selective Laser Capsulotomy

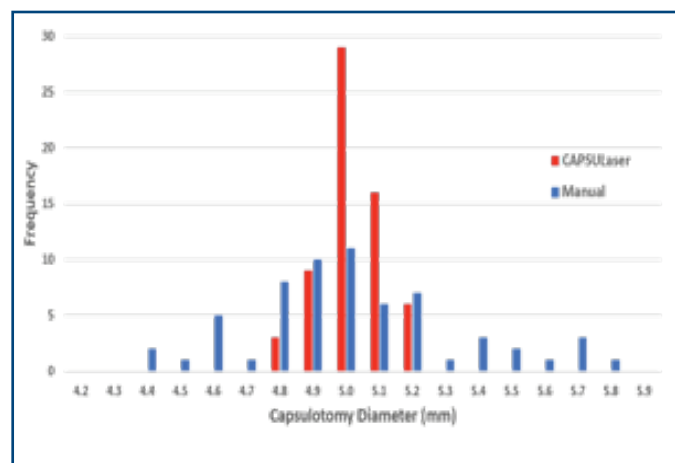
Discover the CAPSULaser Advantage

Imagine a world with precisely Sized, Circular & Positioned Capsulotomies everytime



Study Results - 100% of eyes with 360° IOL coverage with CAPSULaser capsulotomy

In the CAPSULaser CE Clinical study¹ superior sizing, circularity & centration resulted in 100% of the SLC eyes having full 360-degree IOL coverage by the capsulotomy compared with 91% in the CCC group. Other published studies² show even lower full capsulotomy to IOL coverage with Manual at 72% and Femto at 89%.

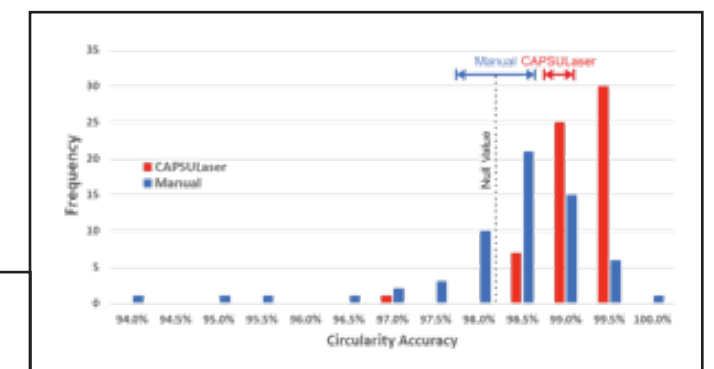
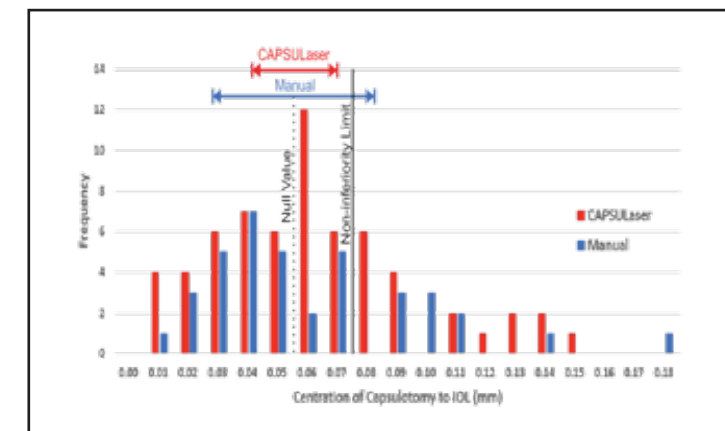


Superior Diameter Accuracy

In the CAPSULaser CE Clinical study 86% of the SLC Eyes were within 0.1mm of target diameter compared to 44% in the manual capsulorhexis group

Superior Circularity Accuracy

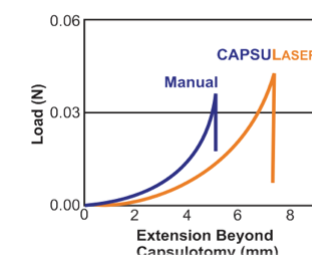
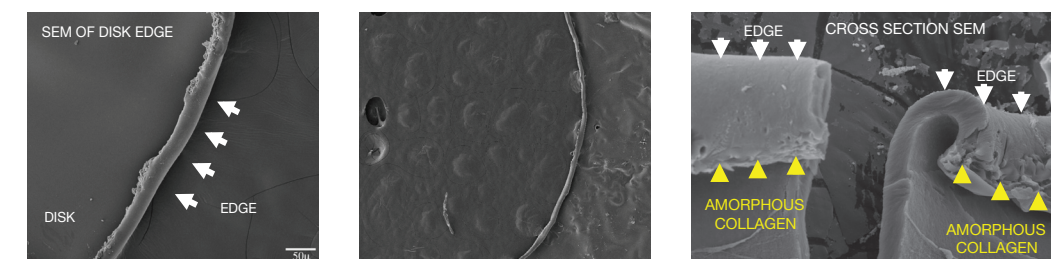
In the CAPSULaser CE Clinical study 88% of the SLC Eyes were within 99% circularity compared to 34% in the manual capsulorhexis group.



Superior Centration

In the CAPSULaser CE Clinical study, 100% of SLC eyes had a capsulotomy within 150 microns from the center of the IOL. The Manual group had decentration up to 782 microns.

An Elastic Capsule Resistant to Tearing



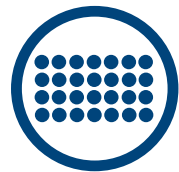
Amorphous Collagen rim has higher elasticity compared to manual CCC

Enhanced Capsular rim for Strength & Flexibility

- Very Smooth - Rolled over edge
- Type IV to amorphous collagen transition



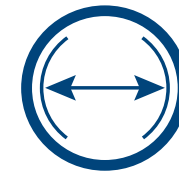
Welcome to the future of Capsulotomy



CAPSULaser is a selective laser that creates a capsulotomy in a second. The laser energy is delivered in a continuous manner rather than a pulsed beam which can create tissue bridges.

In clinical studies
CAPSULaser has demonstrated superior consistency in creating a capsulotomy.

- 100% Free-floating capsulotomy
- 100% 360° IOL coverage



CAPSULaser creates an elastic capsulotomy rim resistant to tearing:

- Rolled over edge (double thickness)
- Smooth amorphous collagen rim
- Continuous 360° tag free profile



CAPSULaser is a small ergonomic device:

- Seamless integration into the cataract work flow
- No requirement to move patient as capsulotomy takes place at the OR microscope



CAPSULaser offers the surgeon laser precision to:

- Pre-select the capsulotomy size from 4.5mm to 5.5mm in 0.1mm increments
- Utilize the integrated patient fixation beam to center the capsulotomy on the visual axis



CAPSULaser provides a cost and time effective solution to create the ideal capsulotomy:

- Affordable acquisition and running costs
- Short and straight forward learning curve
- Non-invasive procedure with improved visualization throughout the surgery



The New Standard in Anterior Capsule Staining

Fast Acting

CAPSULBlue™ can be injected onto the anterior capsule without need of the “air bubble” technique and then removed immediately. There is not the wait time required as with all other commercially available trypan blue solutions

Intense Staining

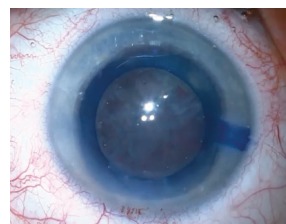
CAPSULBlue™ is an optimized concentration of trypan blue that provides the most effective anterior capsule stain available

Purity & Confidence

CAPSULBlue™ is manufactured under a proprietary purification and filtration process that consistently ensures the highest quality intraocular stain available.

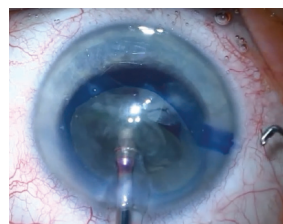


Intense Staining



An intense capsule stain every time, highlights paracentesis incisions for easy access.

Phaco



Dramatically aides visualization of the capsulotomy during phaco.

Lens Implantation



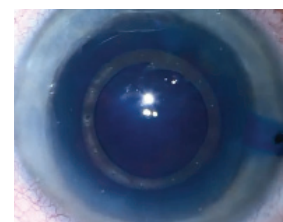
An ideal aide for "In the Bag" IOL placement.

Challenging Cases



An essential tool for use with mature cataracts with no red reflex.

CAPSULaser



The only trypan blue recommended for use with CAPSULaser®.

Technical Specifications

Reference

Type

Wavelength

Maximum Power Output

Duty cycle

Laser duration

European MDD Laser Classification

Voltage

Fusing

Selective Laser Capsulotomy System

Solid State Laser

590+/- 3nm

2000mW

100%, continuous wave

1.0 seconds for 5mm diameter

Class 4

230V / 3.0A – 50Hz

250V T 3.0A

Environmental Requirements

Maximum altitude

Operating temperature

Maximum humidity

3,900m (13,000 feet)

15° - 32°C (59° - 90°F) non-condensing

Up to 90% at 32°C (90°F) non-condensing

Environmental Requirements (non-operating)

Maximum altitude

Non-operating temperature

Maximum humidity

Standard commercial shipping altitude

-10° - 55°C (14° - 131°F)

Up to 90% at 55°C (131°F) non-condensing

Reference

Type

Wavelength

Power Output

European MDD Laser Classification

Aiming Beam

Direct Laser Diode

635 +/- 10nm

From a minimum that is barely visible to a maximum that is less than 10mW

Class 2



CAPSULaser and CAPSULBlue are trade marks of EXCEL-LENS, Inc. 455 North Canyons Parkway, Suite B, Livermore,
CA 94551 USA
www.capsulaser.com